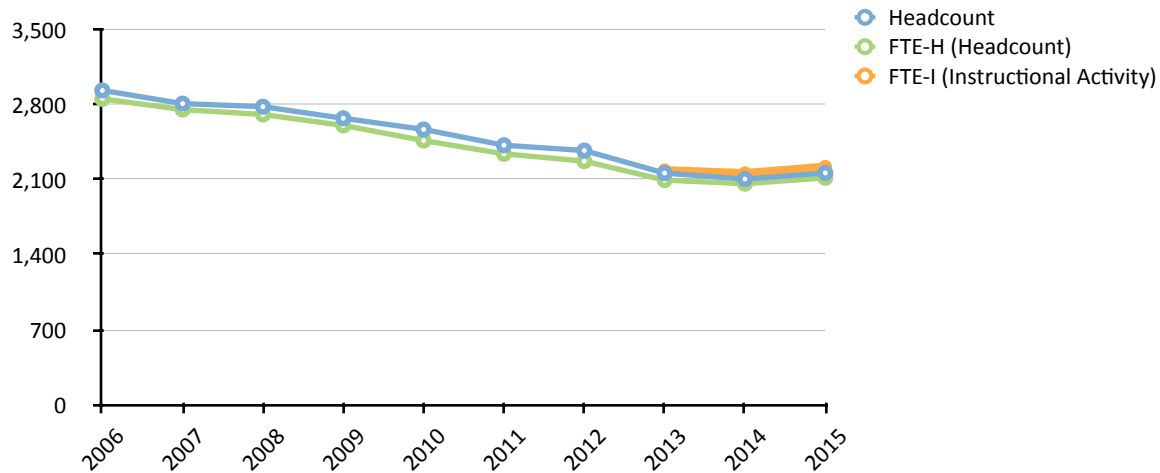


Table 8. Fall enrollment: 2005-2014

	2006	2007	2008	2009	2010	2011	2012	2013	2014	2015
Headcount	2,933	2,810	2,781	2,673	2,569	2,421	2,372	2,161	2,106	2,163
Full-time	2,749	2,659	2,607	2,501	2,402	2,280	2,220	2,002	2,002	2,066
Part-time	184	151	174	172	167	141	152	159	104	97
FTE-H (Headcount)	2,854	2,754	2,708	2,606	2,465	2,341	2,273	2,096	2,062	2,117
FTE-I (Instructional Activity)	-	-	-	-	-	-	-	2,189	2,162	2,222

SOURCE: Integrated Postsecondary Education Data System (IPEDS) (pre-2014 enrollment); Morehouse Banner View AS_STUDENT_ENROLLMENT_SUMMARY; FTE (Headcount) - *Morehouse Fact Book 2004-2008, Morehouse College Fact Book 2011-12, Morehouse College Fact Book 2012-13* (unpublished).

Figure 6. Fall enrollment headcount and FTE: 2006-2015

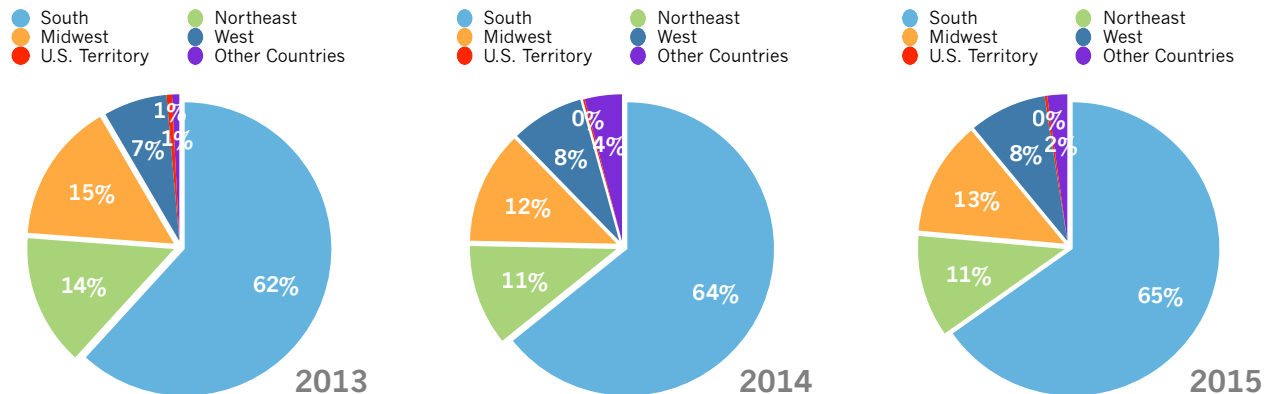


SOURCE: Integrated Postsecondary Education Data System (IPEDS) (pre-2014 enrollment); Morehouse Banner View AS_STUDENT_ENROLLMENT_SUMMARY; FTE (Headcount) - *Morehouse Fact Book 2004-2008, Morehouse College Fact Book 2011-12, Morehouse College Fact Book 2012-13* (unpublished).

NOTES:

1. Enrollment numbers reflect degree-seeking students only. Special/non-degree-seeking students such as Morehouse employees and high school students are not included.
2. Pre-2014 IPEDS enrollment numbers may differ from enrollments reported elsewhere due to differences in reporting.
3. Full-time students are enrolled in 12 or more credit hours; part-time students are enrolled in less than 12 credit hours.
4. Morehouse uses multiple FTE student formulas, see glossary for more details.
5. $FTE-H (Headcount) = (Full-time\ students) + (Total\ part-time\ credit\ hours/12)$.
6. $FTE-I (Instructional\ Activity) = Total\ credit\ hours/15$.

Figure 7. Fall enrollment by regional geographic origin: 2013 - 2015



SOURCE: Morehouse Banner View AS_STUDENT_ENROLLMENT_SUMMARY

Table 9. Fall enrollment by geographic origin: 2013 - 2015

	2013	2014	2015		2013	2014	2015		2013	2014	2015
South	1,420	1,351	1,413	Midwest	296	271	272	Other Country	40	55	47
Alabama	47	50	47	Iowa	1	3	3	Antigua and Barbuda	2	1	-
Arkansas	14	13	7	Illinois	106	98	108	Bahamas	7	6	5
District of Columbia	32	41	46	Indiana	15	13	15	Barbados	-	1	1
Delaware	10	11	13	Kansas	7	6	4	Bermuda	1	1	1
Florida	69	71	89	Michigan	65	50	56	British Virgin Islands	-	1	2
Georgia	696	610	673	Minnesota	7	5	4	Burundi	2	4	3
Kentucky	5	4	4	Missouri	22	21	19	Congo	-	1	1
Louisiana	27	23	19	Nebraska	4	5	3	Cote D'Ivoire	1	1	1
Maryland	174	171	174	Ohio	46	48	41	Ghana	2	3	1
Mississippi	16	16	16	Wisconsin	23	22	19	Guyana	-	-	1
North Carolina	90	100	100	West	176	185	183	India	-	1	1
Oklahoma	2	3	4	Arizona	5	6	6	Jamaica	1	2	1
South Carolina	29	33	32	California	140	147	144	Lesotho	-	1	1
Tennessee	63	61	46	Colorado	13	13	13	Libya	-	1	1
Texas	93	90	90	Hawaii	2	3	2	Nigera	2	1	1
Virginia	51	53	52	New Mexico	1	1	1	Rwanda	2	2	2
West Virginia	2	1	1	Nevada	2	1	4	Senegal	-	1	-
Northeast	241	234	242	Oregon	2	3	4	Serbia	-	1	-
Connecticut	19	15	12	Washington	11	11	9	Sierra Leone	1	-	-
Massachussetts	20	20	19	U.S. Territory	7	10	6	South Africa	6	5	3
Maine	1	1	2	APO/FPO/DPO	3	5	-	Sweden	1	-	-
New Jersey	50	45	59	U.S. Virgin Islands	4	5	5	Trinidad and Tobago	3	3	3
New York	111	107	99	Puerto Rico	-	-	1	Uganda	-	1	1
Pennsylvania	40	46	50					United Kingdom	1	1	1
Rhode Island	-	-	1					Zimbabwe	8	16	16

SOURCE: Morehouse Banner View AS_STUDENT_ENROLLMENT_SUMMARY

NOTES:

1. State/country of origin based on first reported mailing address.
2. Geographic regions based on *Census Regions and Divisions of the United States* published by the U.S. Department of Commerce, Economics and Statistics Administration, U.S. Census Bureau Geography Division (https://www.census.gov/geo/maps-data/maps/pdfs/reference/us_regdiv.pdf).
3. Enrollment numbers for 2013 may differ from those reported elsewhere (i.e. IPEDS) due to differences in data extraction dates.

Table 10. Fall enrollment by race/ethnicity: 2013 - 2015

	2013		2014		2015	
	(#)	(%)	(#)	(%)	(#)	(%)
American Indian or Alaska Native	-	-	1	0.05%	2	0.1%
Asian	-	-	1	0.05%	1	0.05%
Black or African American	2,051	94.1%	1,986	94.3%	2,048	94.7%
Hispanic or Latino	6	0.3%	13	0.6%	14	0.7%
Native Hawaiian or Other Pacific Islander	-	-	-	-	1	0.05%
Nonresident Alien	63	2.9%	66	3.1%	54	2.5%
Two or More Races	5	0.2%	4	0.2%	7	0.3%
Unknown	52	2.4%	34	1.6%	33	1.5%
White	2	0.1%	1	0.05%	3	0.1%
Total	2,179	100%	2,106	100%	2,163	100%

SOURCE: Morehouse Banner View AS_STUDENT_ENROLLMENT_SUMMARY

NOTES:

1. Enrollment numbers reflect degree-seeking students only. Special/non-degree-seeking students such as Morehouse employees and high school students are not included.
2. Data and categories are consistent with current IPEDS reporting guidelines.
3. Enrollment numbers for 2013 may differ from those reported elsewhere (i.e. IPEDS) due to differences in data extraction dates.

Table 11. Fall enrollment by academic division and major: 2013 - 2015

	2013		2014		2015	
	(#)	(%)	(#)	(%)	(#)	(%)
Business Administration and Economics	629	28.9%	595	28.3%	627	29.0%
Business Administration	548	25.1%	518	24.6%	537	24.8%
Economics	81	3.7%	77	3.7%	90	4.2%
Humanities and Social Sciences	691	31.7%	667	31.7%	668	30.9%
African American Studies	13	0.6%	8	0.4%	5	0.2%
Art	16	0.7%	11	0.5%	9	0.4%
Childhood Development	5	0.2%	3	0.1%	2	0.1%
Cinema, Television, and Emerging Media Studies	43	2.0%	69	3.3%	71	3.3%
Drama	18	0.8%	18	0.9%	16	0.7%
English	113	5.2%	104	4.9%	102	4.7%
French	3	0.1%	2	0.1%	2	0.1%
History	23	1.1%	18	0.9%	23	1.1%
International Studies	29	1.3%	35	1.7%	33	1.5%
Kinesiology, Sports Studies, Physical Education	101	4.6%	106	5.0%	119	5.5%
Music	35	1.6%	24	1.1%	27	1.2%
Philosophy	29	1.3%	28	1.3%	27	1.2%
Political Science	152	7.0%	141	6.7%	132	6.1%
Religion	22	1.0%	20	0.9%	21	1%
Sociology	73	3.4%	66	3.1%	64	3.0%
Spanish	9	0.4%	11	0.5%	8	0.4%
Urban Studies	7	0.3%	3	0.1%	7	0.3%

Table 11. Fall enrollment by academic division and major: 2013 - 2015 (cont'd)

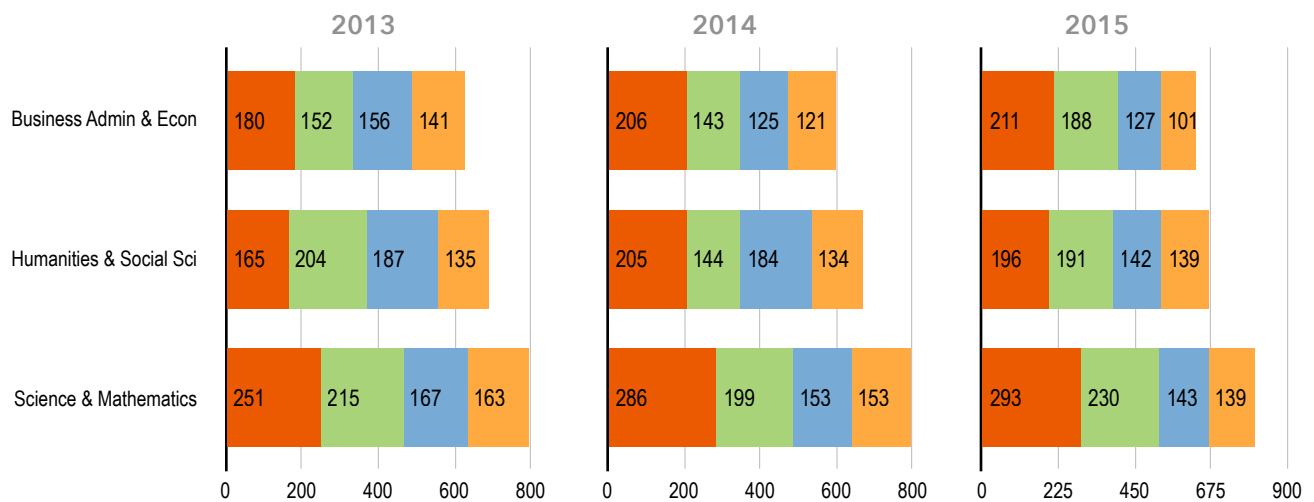
	2013		2014		2015	
	(#)	(%)	(#)	(%)	(#)	(%)
Science and Mathematics	796	36.5%	791	37.6%	805	37.2%
Biology	257	11.8%	263	12.5%	248	11.5%
Chemistry	62	2.8%	53	2.5%	44	2.0%
Computer Science	125	5.7%	117	5.6%	133	6.1%
Dual Degree Engineering*	82	3.8%	133	6.3%	188	8.7%
Mathematics	59	2.7%	58	2.8%	50	2.3%
Physics	80	3.7%	48	2.3%	39	1.8%
Psychology	131	6.0%	119	5.7%	103	4.8%
Undeclared	63	2.9%	53	2.5%	63	2.9%

SOURCE: Morehouse Banner View AS_STUDENT_ENROLLMENT_SUMMARY

NOTES:

1. Enrollment numbers reflect degree-seeking students only. Special/non-degree-seeking students are not included.
2. Enrollment numbers for 2013 may not match those reported elsewhere (i.e. IPEDS) due to differences in data extraction dates.
3. (*) Students majoring in general science or applied physics are enrolled in the Dual Degree Engineering Program (DDEP). Pre-engineering students are also in the DDEP but have not declared a discipline. DDEP students can also major in chemistry, computer science, or mathematics.
4. Although some students may have more than one major, only students' first majors are shown here.

Figure 8. Fall enrollment by academic division and class standing, declared majors: 2013 - 2015



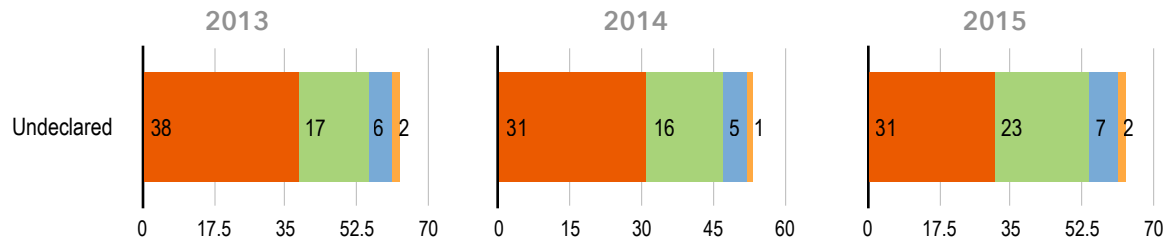
SOURCE: Morehouse Banner View AS_STUDENT_ENROLLMENT_SUMMARY

Legend: Freshman (orange), Sophomore (green), Junior (blue), Senior (yellow)

NOTES:

1. Excludes undeclared major (63 students in fall 2013, 53 students in fall 2014, 63 students in fall 2015).
2. Enrollment numbers reflect degree-seeking students only. Special/non-degree-seeking students are not included.
3. Enrollment numbers for 2013 may not match those reported elsewhere (i.e. IPEDS) due to differences in data extraction dates.
4. Although some students may have more than one major, only students' first majors are shown here.

Figure 9. Fall enrollment by academic division and class standing, undeclared majors: 2013 - 2015



SOURCE: Morehouse Banner View AS_STUDENT_ENROLLMENT_SUMMARY

NOTES:

1. Enrollment numbers reflect degree-seeking students only. Special/non-degree-seeking students are not included.
2. Enrollment numbers for 2013 may not match those reported elsewhere (i.e. IPEDS) due to differences in data extraction dates.