

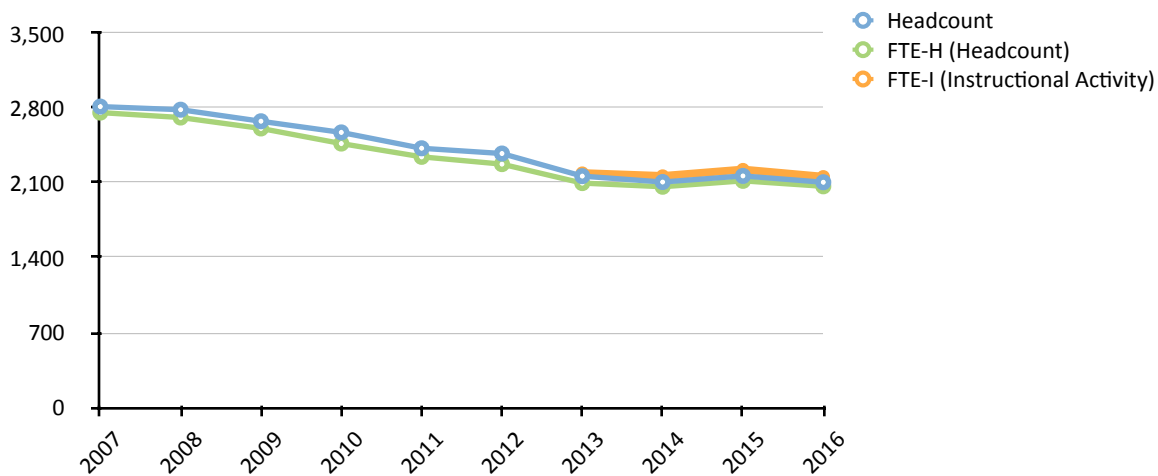


Table 1. Fall enrollment: 2007 - 2016

	2007	2008	2009	2010	2011	2012	2013	2014	2015	2016
Headcount	2,810	2,781	2,673	2,569	2,421	2,372	2,161	2,106	2,163	2,104
Full-time	2,659	2,607	2,501	2,402	2,280	2,220	2,002	2,002	2,066	2,016
Part-time	151	174	172	167	141	152	159	104	97	88
FTE-H (Headcount)	2,754	2,708	2,606	2,465	2,341	2,273	2,096	2,062	2,117	2,066
FTE-I (Instructional Activity)	-	-	-	-	-	-	2,189	2,162	2,222	2,155

SOURCE: Integrated Postsecondary Education Data System (IPEDS) (pre-2014 enrollment); Morehouse Banner View AS_STUDENT_ENROLLMENT_SUMMARY; FTE (Headcount) - *Morehouse Fact Book 2004-2008, Morehouse College Fact Book 2011-12, Morehouse College Fact Book 2012-13* (unpublished).

Figure 1. Fall enrollment headcount and FTE: 2007 - 2016

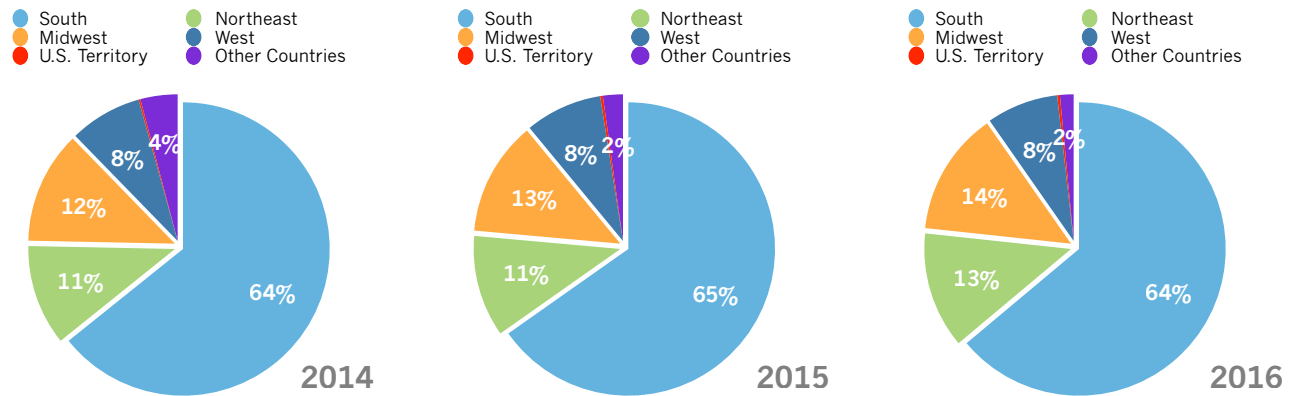


SOURCE: Integrated Postsecondary Education Data System (IPEDS) (pre-2014 enrollment); Morehouse Banner View AS_STUDENT_ENROLLMENT_SUMMARY; FTE (Headcount) - *Morehouse Fact Book 2004-2008, Morehouse College Fact Book 2011-12, Morehouse College Fact Book 2012-13* (unpublished).

NOTES:

1. Enrollment numbers reflect degree-seeking students only. Special/non-degree-seeking students such as Morehouse employees and high school students are not included.
2. Pre-2014 IPEDS enrollment numbers may differ from enrollments reported elsewhere due to differences in reporting.
3. Full-time students are enrolled in 12 or more credit hours; part-time students are enrolled in less than 12 credit hours.
4. Morehouse uses multiple FTE student formulas, see glossary for more details.
5. $FTE-H (Headcount) = (Full-time\ students) + (Total\ part-time\ credit\ hours/12)$.
6. $FTE-I (Instructional\ Activity) = Total\ credit\ hours/15$.

Figure 2. Fall enrollment by regional geographic origin: 2014 - 2016



SOURCE: Morehouse Banner View AS_STUDENT_ENROLLMENT_SUMMARY

Table 2. Fall enrollment by geographic origin: 2014 - 2016

	2014	2015	2016		2014	2015	2016		2014	2015	2016
South	1,351	1,413	1,344	Midwest	271	272	287	Other Country	55	47	32
Alabama	50	47	37	Iowa	3	3	3	Antigua and Barbuda	1	-	-
Arkansas	13	7	10	Illinois	98	108	124	Bahamas	6	5	4
District of Columbia	41	46	53	Indiana	13	15	12	Barbados	1	1	-
Delaware	11	13	14	Kansas	6	4	5	Bermuda	1	1	2
Florida	71	89	78	Michigan	50	56	53	British Virgin Islands	1	2	1
Georgia	610	673	612	Minnesota	5	4	8	Burundi	4	3	2
Kentucky	4	4	7	Missouri	21	19	28	Congo	1	1	-
Louisiana	23	19	23	Nebraska	5	3	1	Cote D'Ivoire	1	1	-
Maryland	171	174	157	Ohio	48	41	41	Ethiopia	-	-	1
Mississippi	16	16	16	Wisconsin	22	19	12	Ghana	3	1	-
North Carolina	100	100	103	West	185	183	166	Guyana	-	1	1
Oklahoma	3	4	6	Alaska	-	-	1	India	1	1	-
South Carolina	33	32	28	Arizona	6	6	5	Jamaica	2	1	1
Tennessee	61	46	51	California	147	144	135	Kenya	-	-	3
Texas	90	90	92	Colorado	13	13	10	Lesotho	1	1	1
Virginia	53	52	56	Hawaii	3	2	1	Libya	1	1	-
West Virginia	1	1	1	New Mexico	1	1	-	Nigeria	1	1	-
Northeast	234	242	269	Nevada	1	4	6	Rwanda	2	2	2
Connecticut	15	12	12	Oregon	3	4	2	Senegal	1	-	-
Massachusetts	20	19	19	Washington	11	9	6	Serbia	1	-	-
Maine	1	2	-	U.S. Territory	10	6	6	Sierra Leone	-	-	-
New Hampshire	-	-	1	APO/FPO/DPO	5	-	-	South Africa	5	3	1
New Jersey	45	59	46	U.S. Virgin Islands	5	5	5	Trinidad and Tobago	3	3	3
New York	107	99	125	Puerto Rico	-	1	1	Uganda	1	1	1
Pennsylvania	46	50	65					UAE	-	-	1
Rhode Island	-	1	1					United Kingdom	1	1	-
								Zimbabwe	16	16	8

SOURCE: Morehouse Banner View AS_STUDENT_ENROLLMENT_SUMMARY

NOTES:

1. State/country of origin based on first reported mailing address.
2. Geographic regions based on *Census Regions and Divisions of the United States* published by the U.S. Department of Commerce, Economics and Statistics Administration, U.S. Census Bureau Geography Division (https://www.census.gov/geo/maps-data/maps/pdfs/reference/us_regdiv.pdf).

Table 3. Fall enrollment by race/ethnicity: 2014 - 2016

	2014		2015		2016	
	(#)	(%)	(#)	(%)	(#)	(%)
American Indian or Alaska Native	1	0.05%	2	0.1%	5	0.2%
Asian	1	0.05%	1	0.05%	3	0.1%
Black or African American	1,986	94.3%	2,048	94.7%	1,993	94.7%
Hispanic or Latino	13	0.6%	14	0.7%	18	0.9%
Native Hawaiian or Other Pacific Islander	-	-	1	0.05%	-	-
Nonresident Alien	66	3.1%	54	2.5%	35	1.7%
Two or More Races	4	0.2%	7	0.3%	9	0.4%
Unknown Race/Ethnicity	34	1.6%	33	1.5%	35	1.7%
White	1	0.05%	3	0.1%	6	0.3%
Total	2,106	100%	2,163	100%	2,104	100%

SOURCE: Morehouse Banner View AS_STUDENT_ENROLLMENT_SUMMARY

NOTES:

1. Enrollment numbers reflect degree-seeking students only. Special/non-degree-seeking students such as Morehouse employees and high school students are not included.
2. Data and categories are consistent with current IPEDS reporting guidelines.

Table 4. Fall enrollment by academic division and major: 2014 - 2016

	2014		2015		2016	
	(#)	(%)	(#)	(%)	(#)	(%)
Business Administration and Economics	595	28.3%	627	29.0%	630	29.9%
Business Administration	518	24.6%	537	24.8%	545	25.9%
Economics	77	3.7%	90	4.2%	85	4.0%
Humanities and Social Sciences	667	31.7%	668	30.9%	657	31.2%
African American Studies	8	0.4%	5	0.2%	5	0.2%
Art	11	0.5%	9	0.4%	14	0.7%
Cinema, Television, and Emerging Media Studies	69	3.3%	71	3.3%	76	3.6%
Drama	18	0.9%	16	0.7%	21	1.0%
Early Childhood Education	3	0.1%	2	0.1%	5	0.2%
English	104	4.9%	102	4.7%	89	4.2%
French	2	0.1%	2	0.1%	1	0.0%
History	18	0.9%	23	1.1%	22	1.0%
International Studies	35	1.7%	33	1.5%	20	1.0%
Kinesiology, Sports Studies, Physical Education	106	5.0%	119	5.5%	111	5.3%
Music	24	1.1%	27	1.2%	29	1.4%
Philosophy	28	1.3%	27	1.2%	31	1.5%
Political Science	141	6.7%	132	6.1%	143	6.8%
Religion	20	0.9%	21	1%	15	0.7%
Sociology	66	3.1%	64	3.0%	59	2.8%
Spanish	11	0.5%	8	0.4%	6	0.3%
Urban Studies	3	0.1%	7	0.3%	10	0.5%

Table 4. Fall enrollment by academic division and major: 2014 - 2016 (cont'd)

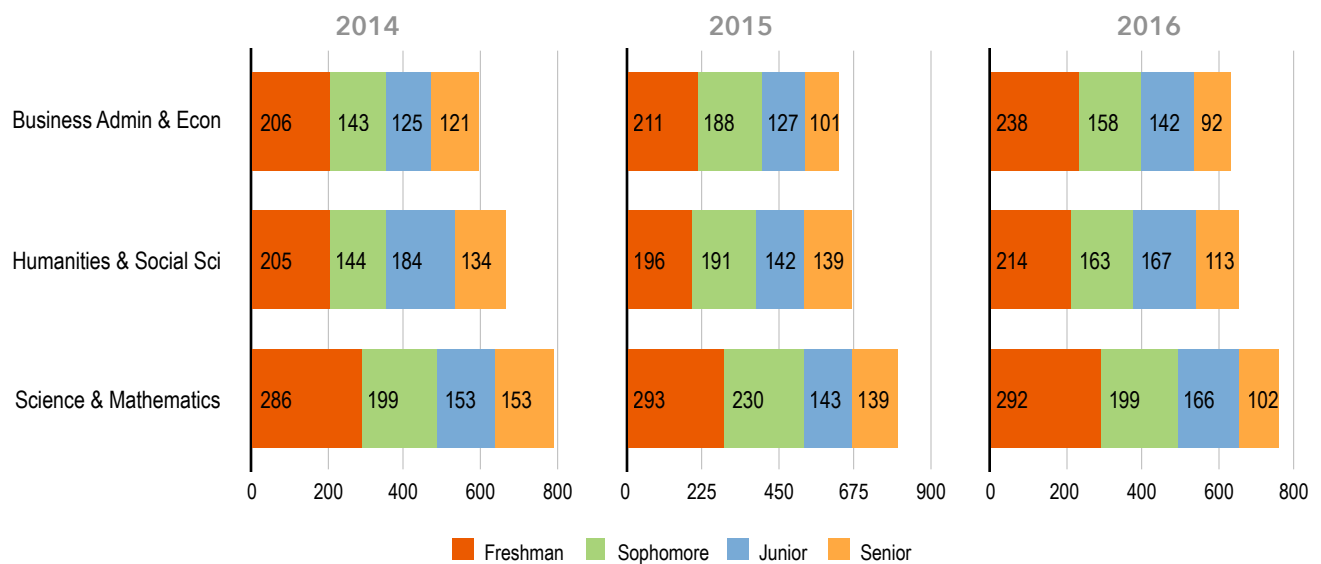
	2014		2015		2016	
	(#)	(%)	(#)	(%)	(#)	(%)
Science and Mathematics	791	37.6%	805	37.2%	759	36.1%
Biology	263	12.5%	248	11.5%	228	10.8%
Chemistry	53	2.5%	44	2.0%	34	1.6%
Computer Science	117	5.6%	133	6.1%	124	5.9%
Dual Degree Engineering*	133	6.3%	188	8.7%	196	9.3%
Mathematics	58	2.8%	50	2.3%	38	1.8%
Physics	48	2.3%	39	1.8%	29	1.4%
Psychology	119	5.7%	103	4.8%	110	5.2%
Undeclared	53	2.5%	63	2.9%	58	2.8%

SOURCE: Morehouse Banner View AS_STUDENT_ENROLLMENT_SUMMARY

NOTES:

1. Enrollment numbers reflect degree-seeking students only. Special/non-degree-seeking students are not included.
2. (*) Students majoring in general science or applied physics are enrolled in the Dual Degree Engineering Program (DDEP). Pre-engineering students are also in the DDEP but have not declared a discipline. DDEP students can also major in chemistry, computer science, or mathematics.
3. Although some students may have more than one major, only students' first majors are shown here.

Figure 3. Fall enrollment by academic division and class standing, declared first majors: 2014 - 2016

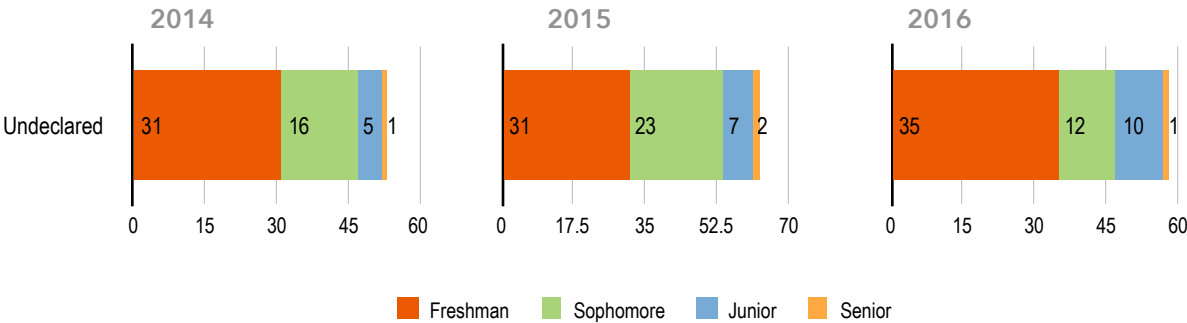


SOURCE: Morehouse Banner View AS_STUDENT_ENROLLMENT_SUMMARY

NOTES:

1. Excludes undeclared major (53 students in fall 2014, 63 students in fall 2015, 58 in fall 2016).
2. Enrollment numbers reflect degree-seeking students only. Special/non-degree-seeking students are not included.

Figure 4. Fall enrollment by academic division and class standing, undeclared majors: 2014 - 2016



SOURCE: Morehouse Banner View AS_STUDENT_ENROLLMENT_SUMMARY

NOTE: Enrollment numbers reflect degree-seeking students only. Special/non-degree-seeking students are not included.