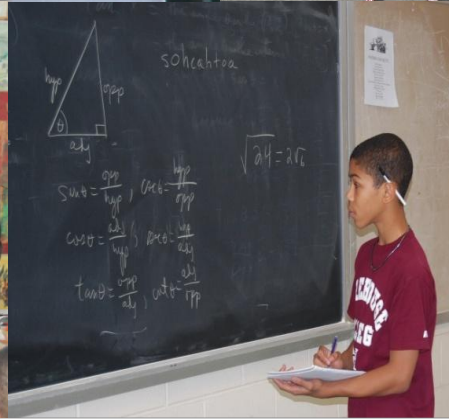


# Project Identity

At Morehouse College

2011 Summer Institute



## The Road to His Future Starts Now

Project Identity is designed to stimulate interest in college attendance and the awareness of college entrance requirements for academically talented African-American and other minority males in high school. Knowing the importance of higher education, participants receive an early start on pursuing, enrolling and succeeding in college through exposure to the humanities, mathematics, science, business and economics as well as social science courses in a rigorous yet fun and exciting setting. Through the use of faculty and college staff, college students and community partners, Project Identity's Summer Institutes provides a network of support, not just for the participants but for the adults who influence them, specifically their parents, school counselors and teachers.

# 2011 SUMMER INSTITUTE APPLICATION



**PROJECT IDENTITY**  
Morehouse College  
Atlanta, Georgia  
July 6<sup>th</sup> through 27<sup>th</sup>, 2011

**Theme A**  
**Leadership through International  
Relations and Politics**  
**Theme B**  
**Leadership through Science  
and Mathematics**

## **W**ELCOME PARENTS

Thank you for your interest in the 2011 Summer Institute. Enclosed you will find information regarding programming including eligibility guidelines, the application process, as well as the goals, objectives, and activities.

**PROJECT IDENTITY** Summer Institute gives rising academically gifted sophomore and junior African American and other minority male high school students an exciting glimpse into academic college life.

Open to in-state and out-of-state students, these 3 week residential programs replicates the college experience with an intense curriculum and enrichment activities to assist in developing their academic, social and leadership skills. Located on the campus of one of the nations largest, private liberal arts college for men, Morehouse College, Project Identity believes that students succeed when given the tools they need in order to pursue higher education.

**MOREHOUSE COLLEGE** is the nation's largest, private liberal arts college for men. Founded in 1867, the college enrolls approximately 3,000 students and confers bachelor's degrees on nearly 500 black men every year. The College offers 26 majors in three academic divisions: Humanities

and Social Sciences, Science and Mathematics, and Business and Economics. Morehouse offers a number of programs and activities to enhance its challenging liberal arts curriculum through the Leadership Center at Morehouse College, the Morehouse Research Institute, and the Andrew Young Center for International Affairs.

**PROJECT IDENTITY** Summer participants experience being independent by living on campus and learning in a structured and supervised environment. Summer Institute students live together in a residential housing and participate in an intense curriculum.

Participants are taught by faculty and community partners and are involved in enrichment activities including preceptorials on various subjects relating to college life and everyday life experiences, community service activities, and field trips.

## TABLE OF CONTENTS

Welcome
Eligibility and Admissions
Summer Sessions A and B
Residential Life at Morehouse
Contact information
Application
Teacher Recommendation Form

# ELIGIBILITY AND APPLICATION PROCESS

## ELIGIBILITY

Project Identity **2011 Summer Institute** brings together a diverse group of academically talented male high school students.

**You are eligible for the Summer Institute if you:**

- a rising sophomore or junior in high school;
- strong scores on the ACT, PSAT or SAT;
- strong GPA (solid A/B average)

Project Identity is looking for motivated students who have a real desire for learning.

## APPLICATION REQUIREMENTS

Students who meet the eligibility requirements are required to:

- **Complete** and sign the 2011 Summer Institute Application;
- **Complete** a 300-word essay written by the applicant, see application for essay topic;
- **Provide** a copy of ACT, PSAT or SAT test score report;
- **Submit** an official copy of last school transcript;
- **Two** completed and signed Teacher Recommendation Forms, from teachers who are familiar with the student's work and can speak to his ability to complete an intensive honors-level program.

## PROGRAM FEE

**2011 Summer Institute** program fee is **\$2,200**. Program fee includes:

- Tuition
- Room and board
- Field trip fees and transportation
- 24 hour staffing and program Instruction

Tuition is due at time of acceptance into the program.

## PROGRAM FEE DEDUCTIONS

Past Project Identity program participants will qualify to be awarded a discount of **\$150** toward the 2011 Summer Institute, if accepted.

## FINANCIAL AID AND SCHOLARSHIP

Financial AID and Scholarships opportunities are not available through Project Identity.

Students admitted to the Institute who are in need are encouraged to send out letters soliciting additional funds. Places to send letters are; your local community or religious organizations, businesses, friends, and relatives are all potential sources of support. In addition, research local scholarships.

## SELECTION PROCESS

A committee comprised of staff at Morehouse College, Project Identity administrators and partners will review all applications and select participants for the 2011 Summer Institute. Applications are reviewed based on eligibility, test scores and GPA as well as essay and letters of recommendation.

## NOTIFICATION

Students are notified of the status of their application through an official email letter.

**Tuition is due at time of acceptance.**

Accepted students will then receive an admissions packet through the mail containing all relevant details about the program including; Parent orientation, schedule of activities, items to bring, health and medical information, rules and policies, etc.

## LATE APPLICATIONS

**Late applications will not be accepted.**

Applications, materials and tuitions postmarked or submitted after **June 17, 2011** will not be reviewed or accepted.

## REFUND POLICY

The refund policies are as follows:

- **Before program begins:** participants may obtain a full refund if request is received in writing 5 business days prior to the start of the program.
- **After program begins:** there are no refunds after the program start date. This includes if participant is dismissed from program.

Please allow up to 30 standard business days after refund is requested in writing for payment.

# “Leadership through International Relations and Politics”

## July 6-27, 2011



### OVERVIEW

The **2011 Summer Institute** is offering two distinctive learning experiences. Participants involved with “**Leadership through International Relations and Politics**” will explore different concepts of international diplomacy, leadership development and the importance of personal service. Participants will not only learn from a global perspective but also the complexities of a changing and expanding global community.

Today our young leaders must learn about different perspectives and customs that are converging from the four corners of the globe.

“**Leadership through International Relations and Politics**” gives participants a forum to address the rising global concerns in a “real world, hands-on” context. Participants will address important issues including regional conflicts, peacekeeping, human rights, economic and social development, and the environment. Our goal is to provide participants with a better understanding of the inner working of the United Nation by engaging in an authentic simulation of the United Nations system.

**2011 Summer Institute** participants will also take part in additional leadership development sessions facilitated by instructors from Morehouse College and community partners including evening preceptorials. These preceptorials will feature exceptional guest speakers from a variety of fields, including political and business leaders, local community activists and other individuals who are making a direct impact in not only their communities but globally.

#### Participants will:

- **Develop** communication, problem solving and critical thinking skills
- **Learn** theories and methods of diplomacy, personal leadership and social change
  - **Engage** in debates around world politics
  - **Challenge** participants to become engaged in leadership learning
- **Participate** in civic involvement through community service and leadership activities

#### Topics Include:

- Model United Nations (International Diplomacy)
- F.O.C.U.S on Leadership
- Creative Writing
- Chess
- Civic Engagement
- Field Trip
- Philosophy and Logic
- Business Etiquette
- Debate

*Topics subject to change at any time*



“Being a PI summer participant has allowed me to not only feel challenged academically, but to also learn more about current situations that affect African American men. This program has allowed me to increase my confidence” - 2009 Summer Institute Participant



# “Leadership through Science and Mathematics”

July 6-27, 2011

## **O**VERVIEW

The “**Leadership through Science and Mathematics**” session will enhance participant’s awareness of the thriving fields of science and mathematics. Participants engage in meaningful academic activities and explore in detail areas in advanced science focused around Environmental Science, Robotics and strengthening participant’s core mathematics knowledge.

“**Leadership through Science and Mathematics**” goal is to cultivate the next new generation of scientists, mathematicians, and engineers who will become not only local but also global leaders. Participants will become engaged in a global understanding of the scientific, social, political, economic, and cultural aspects of mankind’s lasting impact on our environment. Participants will not only gain tools and strategies for positive scientific change but research numerous other scientific issues and how it impacts predominately communities of color. Participants engage in open debates about; where do most of these problems come from? What can they do about these issues, and most importantly, how can they make a positive impact on their own environment and community?

“**Leadership through Science and Mathematics**” creates an environment where each individual can participate in an intensive academic experience delivered by distinguished educators, scientists, and researchers.

In addition to the course work, students will engage in group discussions on a variety of social and global issues and participate in evening Preceptorials. These Preceptorials will feature exceptional guest speakers from a variety of fields, including political and business leaders, local community activists and other individuals who are making an direct impact in not only their communities but globally.

### **Participants will:**

- **Develop** communication, problem solving and critical thinking skills
  - **Learn** what it is to be an effective leader
- **Challenge** participants to become engaged in science and mathematics learning
  - **Participate** in research projects
- **Identify** practical ways to become active in local communities

### **Topics Include:**

- Robotics
- Mini Medical School
- F.O.C.U.S on Leadership
- Philosophy and Logic
- Science Research Project
- Field Trip
- Biology Laboratory
- Chess
- Math Tutorial

*Topics subject to change at any time*



*“I was able to experience firsthand the promise of the next generation and the enormous potential they have. The program also gave me the opportunity to pass on my knowledge and experiences.” -2009 Project Identity Summer Mentor*



# RESIDENTIAL LIFE AT MOREHOUSE COLLEGE

## RESIDENTIAL LIVING

Residential living is an exercise in community development that provides students with opportunities for communal study, shared responsibility, cooperation and congenial living, self-management and group cohesiveness. Students are required to treat each other with mutual respect, support, trust and interdependence, recognizing the strengths and limitations of others.

## HOUSING & CAMPUS FACILITIES

All Summer Institute participants live in one of the residential halls on Morehouse Campus, under the constant supervision of trained residential directors and Summer Institute mentors. Students live in a single-sex residential hall in double rooms. Students on the same floor share bathrooms and eat with residential staff and other members of the college community in the campus dining hall. Students also have access to other campus facilities, including residential hall laundry rooms, libraries, computer labs and recreational spaces.

## RECREATIONAL ACTIVITIES ON CAMPUS

Outside of class, students participate in a variety of activities facilitated by the Summer Institute mentors and Project Identity staff, including sports, games, arts, and volunteer projects.

## STUDENT SAFETY & PROGRAM CONDUCT

The safety of the Summer Institute participants is extremely important to Project Identity. We take every reasonable step possible to ensure the safety on and off campus. Morehouse College has a student health center located directly on campus.

## HIRING SKILLED SUMMER MENTORS

Project Identity's Summer Institute mentors are a talented group of Morehouse College student's commitment to mentoring Institute participants. Our Summer Institute mentors are undergraduate Morehouse students or recent Morehouse college graduates. They are selected through a competitive process that weighs such factors as academic background, community service experience, and experience working with youth in a residential setting.

## CAMPUS SECURITY

Morehouse College has a fully functioning police station located directly on campus.

## SUPERVISION OF PARTICIPANTS

Although participants are responsible for their own personal conduct, Project Identity staff all work together to provide clear and direct guidelines and constant supervision. Participants are supervised during class time by an instructor and mentors and by the RD and mentor staff during evening and weekend hours. Administrative staff is also on site for additional support and supervision.

### TYPICAL DAY FOR PARTICIPANT

<b>6:30–9:00</b>	Wake Up & Breakfast
<b>9:00–12:00</b>	Workshop
<b>12:00–1:00</b>	Lunch
<b>1:00–5:00</b>	Workshop
<b>5:00–5:30</b>	Activity/Free Time
<b>5:30–7:00</b>	Dinner
<b>7:00–7:30</b>	Residential Dorm Meeting
<b>7:30–11:00</b>	Study Time or Preceptorials
<b>11:00</b>	Lights Out

## PRECEPTORIALS

In addition to the core curriculum and activities, students have the opportunity to engage in focused discussions of social issues through Preceptorials. Preceptorials are short seminars designed by students and led by PI staff and faculty. Preceptorials foster an interactive and educative environment that values learning. Students are given the opportunity to have a unique learning experience outside the traditional setting of a classroom. The majority of Preceptorials emphasizes a hand on approach to learning, and meets in the evenings over the course of the summer institute.

## GUEST LECTURE SERIES

Summer participants will have access to a wide range of guest speakers from a variety of important fields of study, such as political and business leaders, local community activists and other partners who are make an impact in their communities. Guest speakers facilitate presentations, discussions, hands on activities which engage and challenges students.



## IMPORTANT REMINDERS

### June 17, 2011

Final Application and Program Fee due date

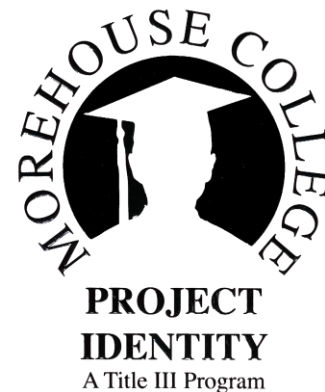
### July 6-27, 2011

#### Theme A

"Leadership through International Relations and Politics"

#### Theme B

"Leadership through Science and Mathematics"



## CONTACT US

Please read over the eligibility requirements and Session descriptions carefully before turning in all materials.

### Mail all materials to:

#### **Project Identity**

Morehouse College  
830 Westview Drive  
Atlanta, Georgia 30314

### If you have specific questions feel free to contact us at:

**Email:** [lhwillis@morehouse.edu](mailto:lhwillis@morehouse.edu)

**Office:** 404-653-7766

# 2011 SUMMER INSTITUTE

## APPLICATION FOR ADMISSION

PLEASE SELECT ONE PROGRAM  
THEME:

- Leadership through International Relations and Politics
- Leadership through Science and Mathematics

Please type or print clearly. Completing this application in no way guarantees admittance into the 2011 Summer Institute.

### Applicant Information

APPLICANT FIRST NAME MIDDLE LAST

DATE OF BIRTH CURRENT GRADE LEVEL CURRENT GPA

ADDRESS NUMBER AND STREET

CITY STATE ZIP

HOME PHONE PARENT EMAIL

### Past Project Identity Participant

Yes, I'm a past Project Identity participant and qualify for the fee reduction.

**Race/Ethnicity**  Caucasian  Native Alaskan/Native American  African-American  Asian/Pacific Islander  
 Hispanic  Multiracial  Other \_\_\_\_\_

### School Information

NAME OF SCHOOL Type of school:  Public  Private/Independent  Home School

SCHOOL ADDRESS NUMBER CITY STATE ZIP

### Contact Information

PARENT/GUARDIAN #1 NAME (FIRST/LAST)

Mother  Father  Legal Guardian

DAY PHONE CELL PHONE EMAIL

PARENT/GUARDIAN #2 NAME (FIRST/LAST)

Mother  Father  Legal Guardian

DAY PHONE CELL PHONE EMAIL

With whom do you reside your permanent home?  Parent 1  Parent 2  Both  Other

T-Shirt Size (all youth sizes):  Small  Medium  Large  XLarge  XXLarge

### Please indicate how you first learned about Project Identity

Teacher/Counselor  Website  Advertisement, if so which \_\_\_\_\_  Other \_\_\_\_\_

### Volunteer Activities (Including Summer)

Please list all of your extracurricular, community and summer activities. List any personal interest that you may have been involved in during the school year. Include specific events in and out of school including sports, musical instruments played, etc. Circle the appropriate grade to specify year activity performed.

Activity	Circle Grade Level	Approximate time spent Hours per week/and or weeks per yr	Positions held, honors won, or letters earned
	7 8 9 10 11		
	7 8 9 10 11		
	7 8 9 10 11		
	7 8 9 10 11		
	7 8 9 10 11		

### Academic Honors

Briefly list or describe any scholastic distinctions or honors you have won since the seventh grade (e.g., AB honor roll, National Merit).

### Test Information

Please be sure to input all test scores previously taken. If you have taken a test more than once, and would like for the School to see the improvement scores, just put those scores in application. Attach official test scores to application.

#### ACT

Date taken/to be taken \_\_\_\_\_

\_\_\_\_\_ English Math Reading Science Composite Combination English/Writing

#### PSAT/ SAT 1 or SAT Reasoning Test

\_\_\_\_\_ Date taken/to be taken Verbal/Critical Reading Math Writing

### Essay

Please provide a typed response to the following essay listed below and attach to application. Please do not provide more than a 300 word essay.

Throughout history there have been numerous important and life changing inventions and discoveries made by African Americans. If you were given financial support to invent the next big life-changing product, what would you invent? And, why would you invent that product?

**For the Student**

I understand that, as a participant in Project Identity, I have the responsibility to work to the best of my ability in all of my classes, that I will conduct myself appropriately and follow all rules, regulations and policies of the Project Identity program, that I will support the efforts of Project Identity staff and participants to preserve the cleanliness and beauty of the campus, that I will respect the property of others, and that I will respect the rights and privileges of all Project Identity students, faculty, staff, and others of the campus community. I understand that failure to comply with the above may lead to dismissal from the program.

**For the Parent**

I hereby grant permission for my child to participate in Project Identity at Morehouse College. I hereby agree to hold harmless and release the College, its officers, trustees, agents, students and employees (“Releases”) from any claims of damage arising from my child’s participation in the program. I have signed this release with full recognition and appreciation of the risks of such activities, including risks associated with transportation to and from Morehouse College. I understand that Morehouse College has no medical personnel on Project Identity program and trips. I agree that Morehouse College personnel assigned to Project Identity are granted permission to authorize emergency medical treatment if necessary and that such action by persons shall be subject to the terms of this release. I understand that Releases assume no responsibility for any injury or damage that might arise out of or in connection with such emergency medical treatment I further agree that this consent and release shall be construed in accordance with the laws of the State of Georgia. If any term or provision of this consent and release shall be held illegal unenforceable or in conflict with any law governing this consent and release, the validity of the remaining portions shall not be affected. I further state that I am the participant’s Parent/Guardian, and am fully competent to sign this agreement, and that I execute this consent and release for full, adequate and complete consideration fully intending for myself and for my family to be bound by the same. I understand that it is my responsibility to make sure that my child follows Project Identity rules and regulations. I understand that if my child fails to follow Project Identity program rules and regulations, he will be dismissed from the program.

We certify the above information is complete and correct. We have read and understand the above consent and release statement and agree to the program’s policies and procedures.

\_\_\_\_\_  
**Signature of Student**

\_\_\_\_\_  
**Date**

\_\_\_\_\_  
**Signature of Parent or Legal Guardian**

\_\_\_\_\_  
**Date**

**Mail Completed Application To:**

**Morehouse College**  
Project Identity  
830 Westview Drive. S.W  
Atlanta, GA 30314

**Application Check List:**

- Completed application**
- Official copy of report card
- 2 Teacher Recommendations Forms
- Copy of SAT, PSAT or ACT test scores

*Program fee is not due until notification of admittance into Summer Institute.  
Initial notification will come via email provided in application.*

**For Office Use Only**

REC'D \_\_\_\_\_ DATA ENT \_\_\_\_\_ APP COMP \_\_\_\_\_ PAY REC'D \_\_\_\_\_ ADM \_\_\_\_\_ DENY \_\_\_\_\_

# 2011 SUMMER INSTITUTE

## TEACHER RECOMMENDATION FORM

Project Identity's **Summer Institute** is a 3 week enrichment summer program that provides academically talented African American and other males of color with opportunities to learn and enjoy topics that they may not have been exposed to in their current academic settings. We offer innovative courses and activities focused on a variety of advance placement formatted topics that take students further than a standard school curriculum. Each session not only encourages participants to explore ideas and applications from different perspectives based on specific themes but foster an interest in learning.

To be considered for admittance into the Summer Institute, students are required to submit a teacher recommendation.

STUDENT NAME (FIRST/LAST)	GRADE	
TEACHER NAME (FIRST/LAST)		
TITLE/DEPARTMENT		
SCHOOL NAME AND ADDRESS NUMBER/ STREET		
CITY	STATE	ZIP
OFFICE PHONE	EMAIL	

**Please rate this student in the following categories by checking the box that best reflects his skills.**

Qualities of Student	Exceptional	Average	Below Average	Does Not Apply
Motivation				
Maturity				
Ability to learn independently				
Academic achievement				
Ability to work with others				
Leadership ability				
Interest in service/social issues				
Ability to work at high levels of study				
Writing ability				

**Please rank the student's likelihood of succeeding in an accelerated Summer program:**

- Very likely  
  Likely  
  Somewhat likely  
  Not likely

Please feel free to attach an additional descriptive letter recommendation (optional).

Thank you for agreeing to submit a recommendation in support of this applicant for admission to the 2011 Summer Institute at Morehouse College. Please place this form and any additional personal letter(s) of recommendation (if needed) in a sealed envelope with your signature over the flap and return it to the student. If this is not possible, mail or fax the recommendation directly to:

**Mail Completed Recommendation Form and Optional Letter To:**  
**Project Identity**  
 Morehouse College  
 830 Westview Drive. S.W  
 Atlanta, GA 30314