

Faculty Spotlight

Dr. Lance Shipman



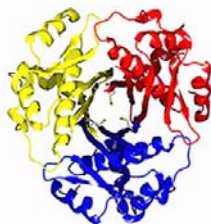
Chemistry Department

Dr. Lance Shipman, a 1995 Morehouse College graduate, finished his Ph.D. in Chemistry at Texas A&M University in 2001, and post-doctoral fellow at Emory University School of Medicine in 2003. Dr. Shipman joined the faculty at Morehouse in 2003, and during these few short years he has made outstanding research and academic contributions.

As a structural biologist and research scientist, Dr. Shipman has recently published in the *Journal of Molecular Biology* on the structural

characterization of N⁵-glutamine methyltransferase from *E. coli*. He has also received two grants to study the regulation of glucokinase and the structure and function of its regulatory protein with the potential of providing a therapy in the management of diabetes. Specifically Dr. Shipman received \$175,000 in a NSF Research Initiation grant, and \$198,000 from an NIH MBRS SCORE grant.

Dr. Shipman has significantly impacted the Division of Science and Mathematics since his arrival at Morehouse. Having been involved in Peer Lead Team Learning (PLTL) during his doctoral and postdoctoral training, he was able to immediately contribute to the college by serving as a Co-Principal Investigator on a chemistry department proposal to Keck to enhance the chemistry laboratories and implement PLTL in general and organic chemistry. He also received a \$10,000 award to support PLTL Leaders in the Chemistry Department. Dr. Shipman says that PLTL not only aids in retention, but helps create the next generation of leaders that will serve as science advocates and role models for future generations.



Acyl Carrier Protein Synthase
Structure by Dr. Lance Shipman